



Vivitek Interactive Installation Overview

Pen and Finger Touch Modes

Product Marketing Department
October 22, 2014
Version 2

A brand of  **DELTA**

vivitek® Interactive Functionality

Pen Mode Installation

- Standard Items
- Install D-Point 2 Driver
- Complete Installation
- Connecting Projector to PC
- Configuration Settings
- Confirmation

Finger Touch Mode Installation (DT01/DT02)

- Standard Items
- Module Overview
- Finger Touch Kit Installation
- Methods of Powering the DT01/DT02
- Configuration Settings
- Alignment Settings
- Configuration Settings
- Confirmation



Interactive Functionality

Pen Mode Installation

vivitek® Accessories: In-The-Box Items

Standard items



Interactive Pen



USB Cable
(Black Colored)



Documentation Kit



Setting Up D-Point 2 with Interactive Pen

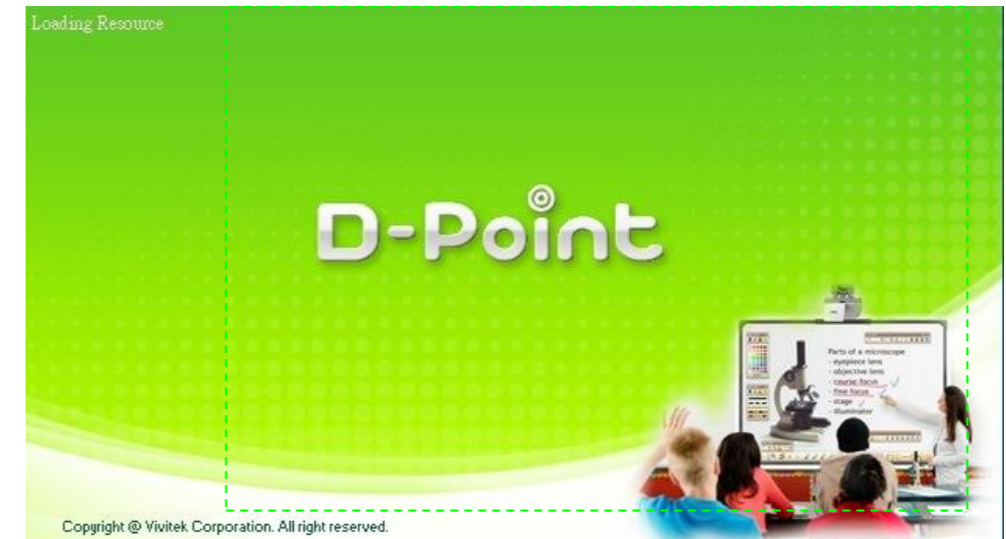
Step 1: Install D-Point 2 Driver

Locate driver and follow instructions for _____
installation

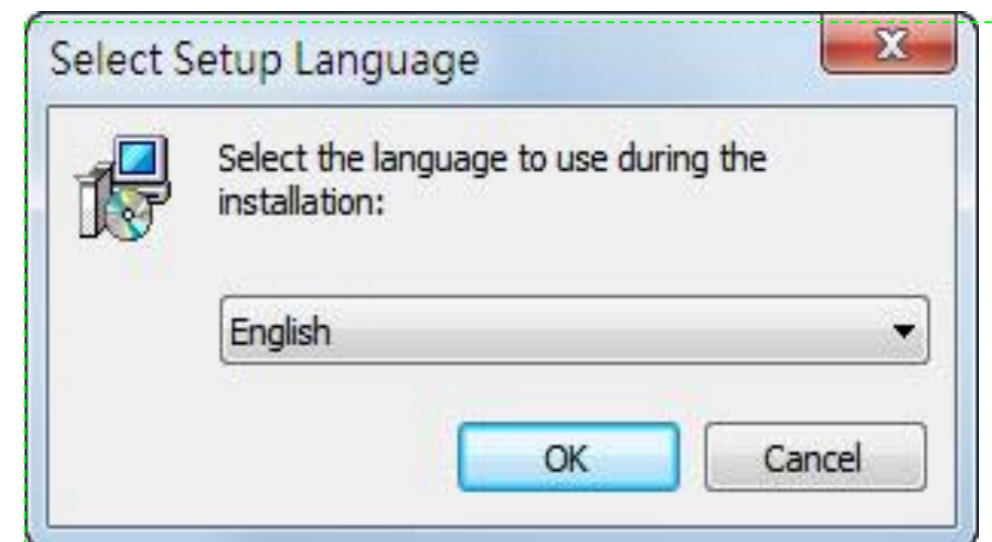
setup.exe

*Note: D-Point 2's driver version is:
2.2.2.1*

Follow the D-Point 2 setup instructions to _____
complete installation.



Select required language and click "Ok" _____





Setting Up D-Point 2 with Interactive Pen

Step 2: Complete Installation

D-Point 2 icon will be created on the desktop. Installation folder will be created on C: directory.

Enable D-Point Driver from the PC's Desktop: 2 methods

Method 1: Desktop



Method 2: Start-up Menu



Note:

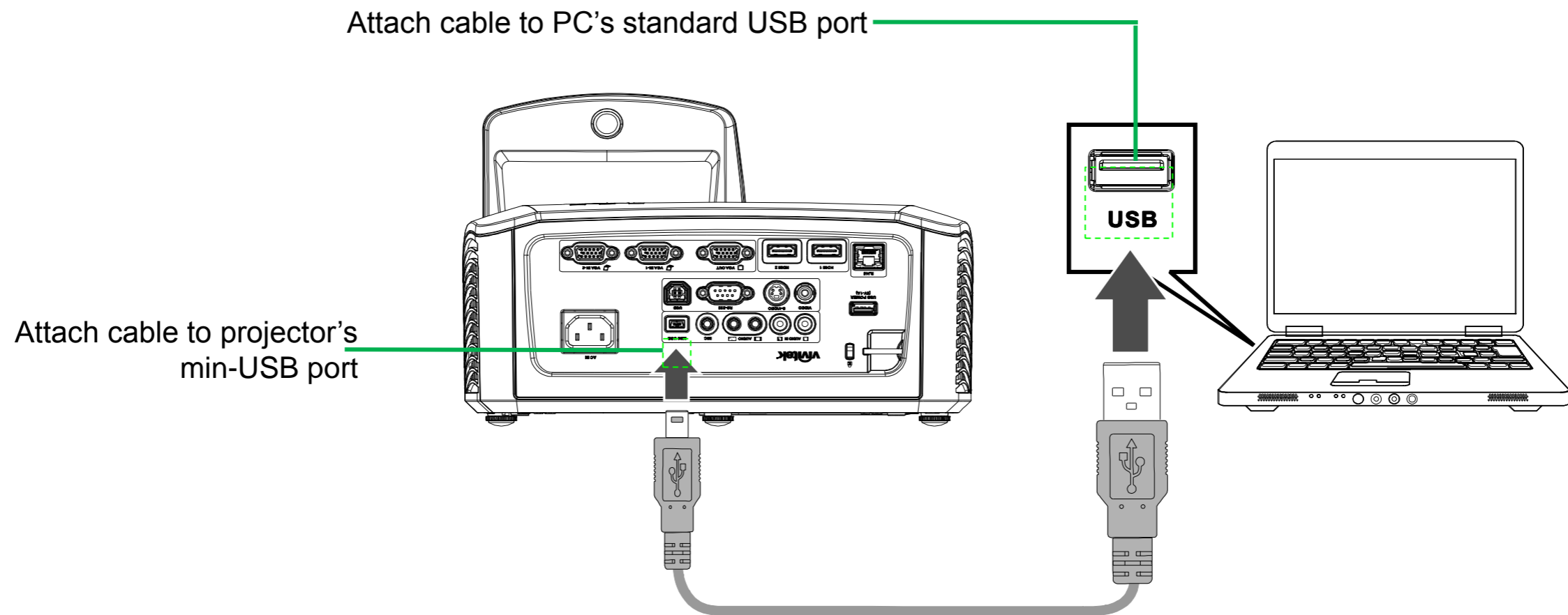
Upon starting D-Point 2, the configuration window will appear on the desktop to assist in setting up the D-Point 2 configuration.



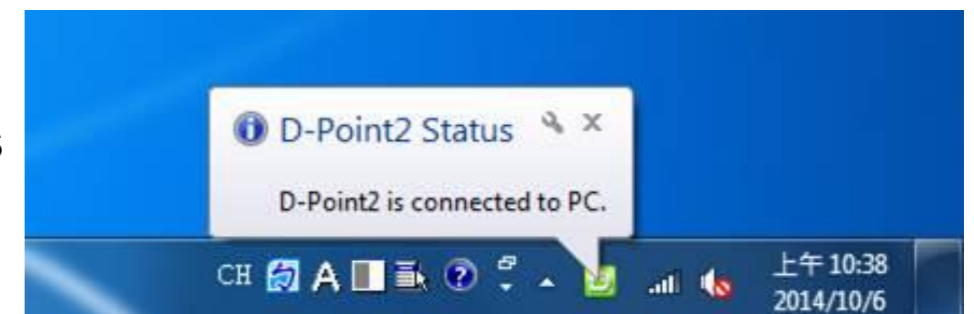
Setting Up D-Point 2 with Interactive Pen

Step 3: Connecting Projector to PC

Connect the Projector to a PC via the supplied USB cable. Plug the mini-USB cable into Projector's mini-USB port and the other end to the PC.



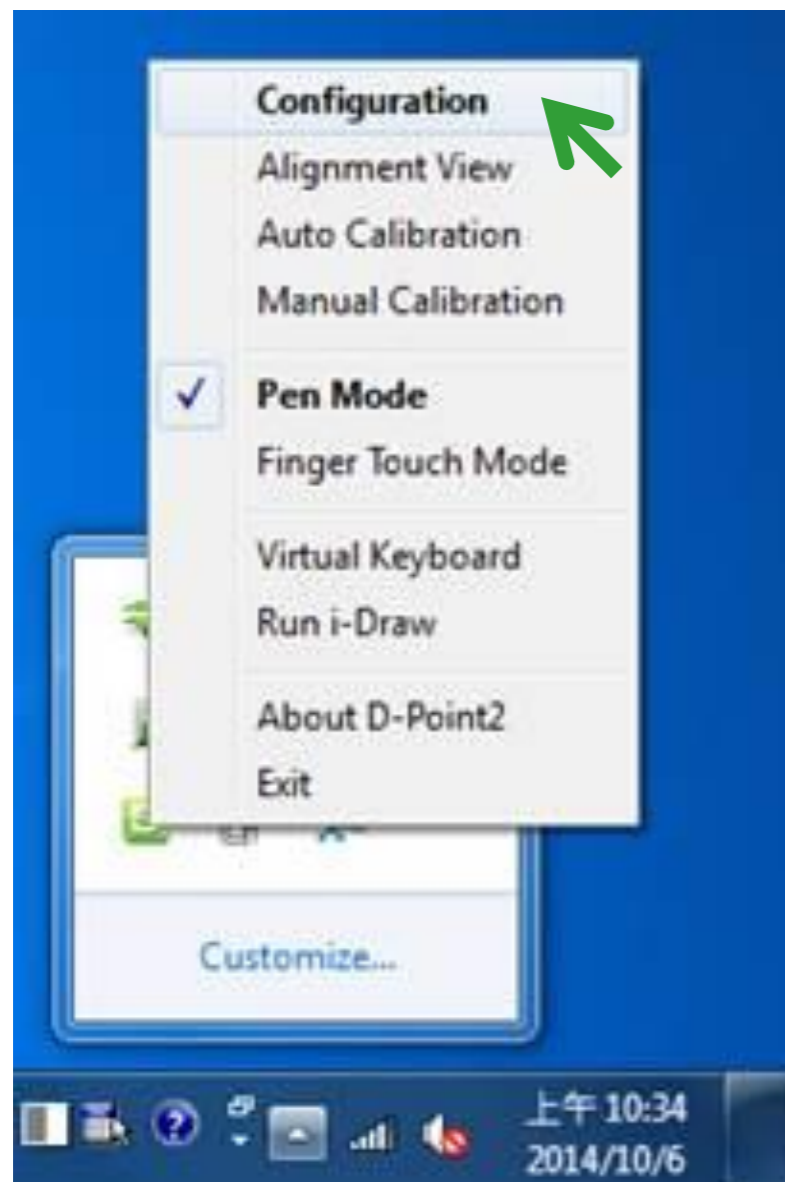
Note: Once USB cable has been connected, confirm that the PC's driver and projector have been successfully installed.



vivitek® Setting Up D-Point 2 with Interactive Pen

Step 4-1: Configuration Settings

1. Choose "Pen Mode" →
2. Choose Configuration Settings





Setting Up D-Point 2 with Interactive Pen

Step 4-2: Configuration Settings

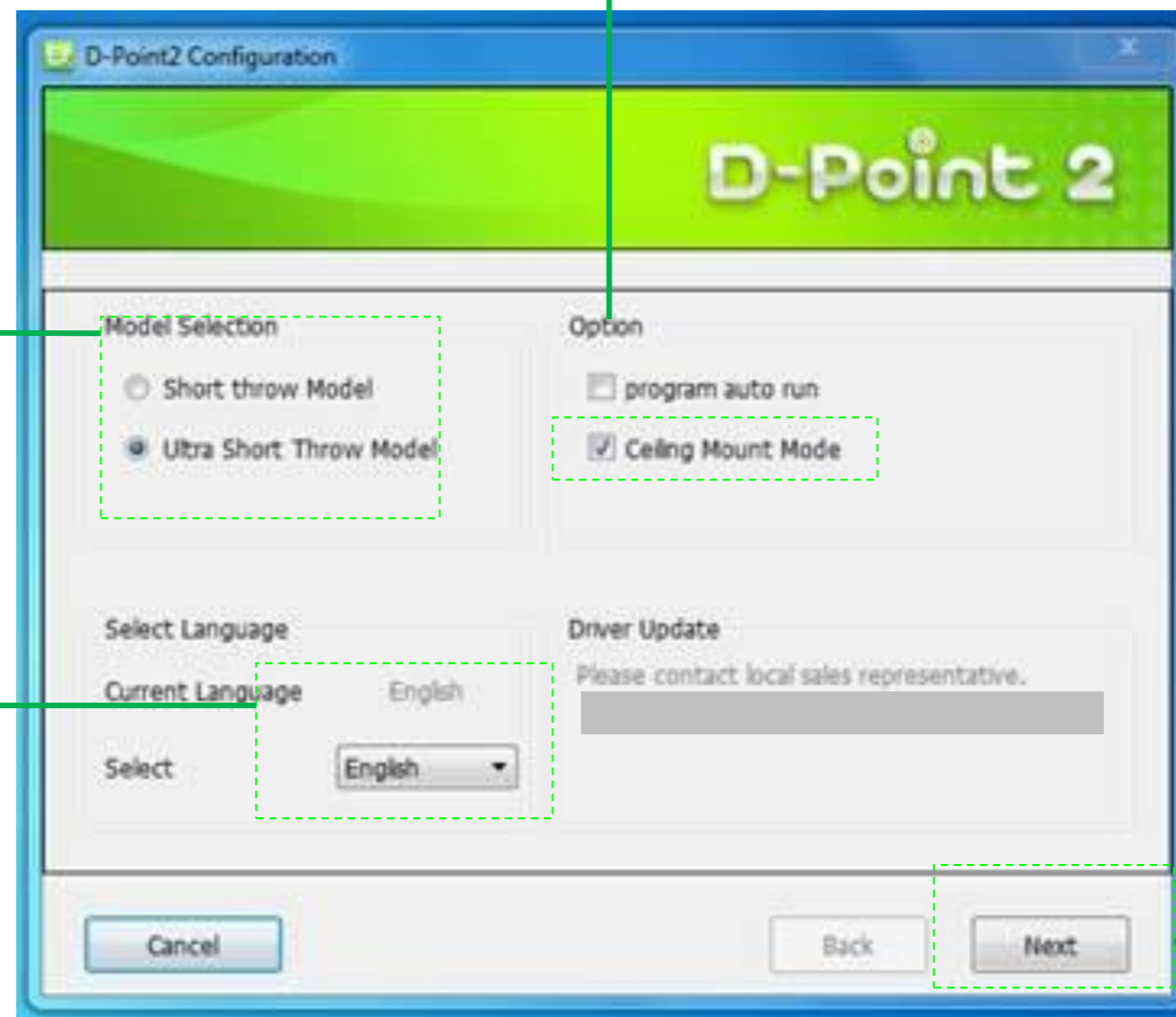
1. Projector Model

- Choose “Ultra Short Throw Model”

2. Choose Option

- Ceiling Mount Mode

Note: If projector is placed on the table, do not choose this item.



Choose Next

3. Choose Language

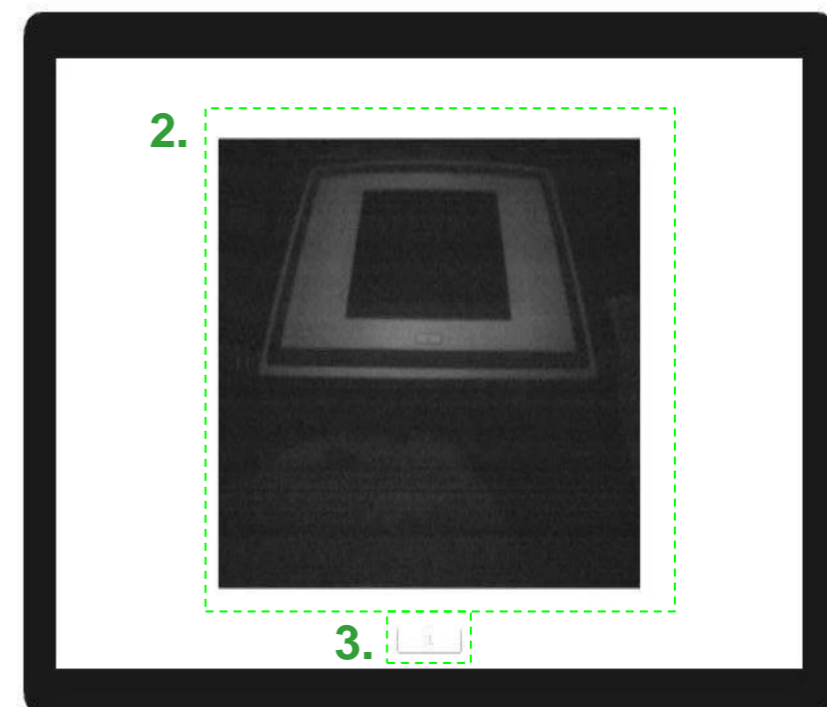
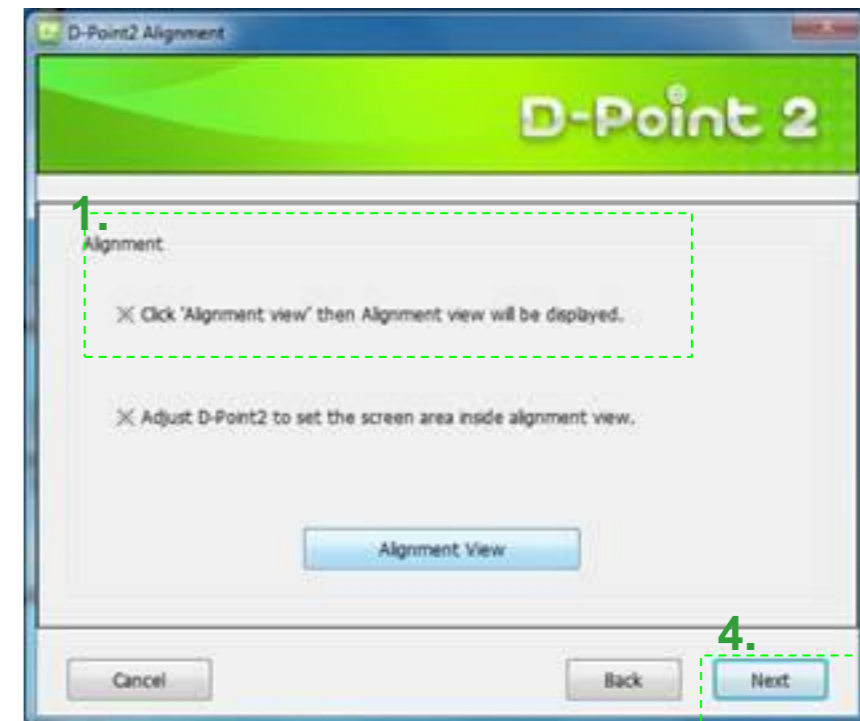
- If language setting is changed, just restart D-Point 2 for settings to change.



Setting Up D-Point 2 with Interactive Pen

Step 4-3 : Configuration Settings

1. Choose Alignment View
2. Confirm if the projection screen is within the camera's projected area
 - Note: Alignment View helps visually verify that the IR camera's view is aligned within the projector's projection coverage.
3. Click "Ok"
4. Choose "Next"

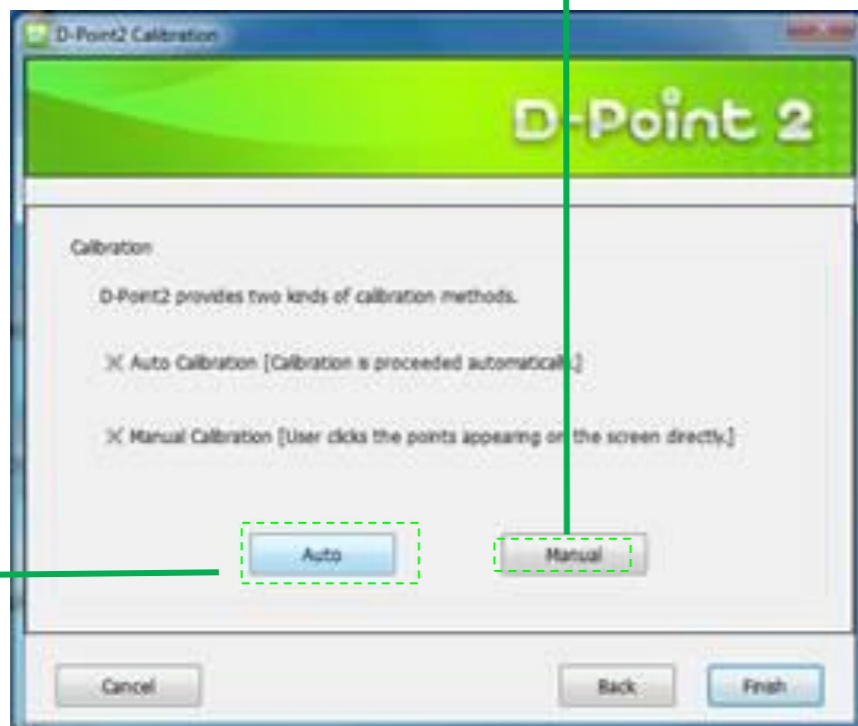


vivitek® Setting Up D-Point 2 with Interactive Pen

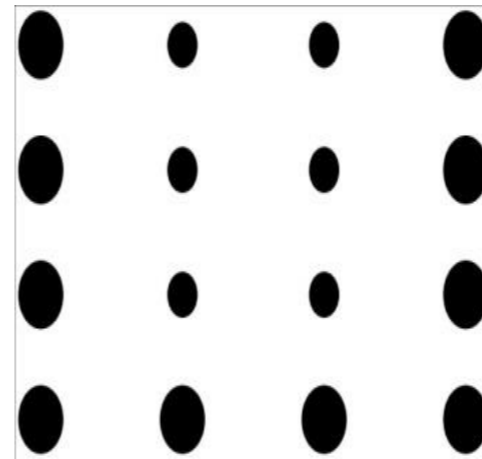
Step 4-4 : Configuration Settings

1. Chose Calibration (2 choices)

- a) Auto (Suggested)
- b) Manual



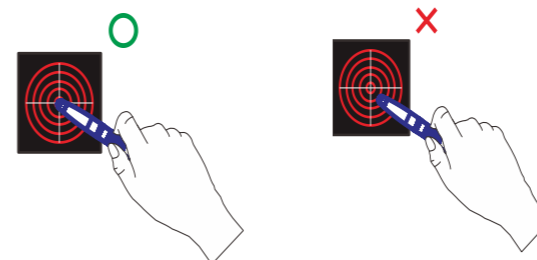
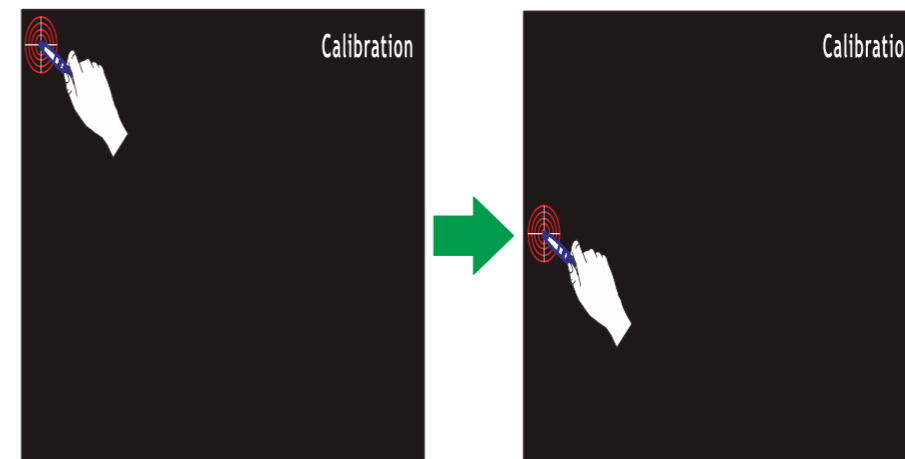
Auto Calibration



Note: Auto calibrations takes a few seconds.

Manual Calibration

Note: There are 16 calibration points



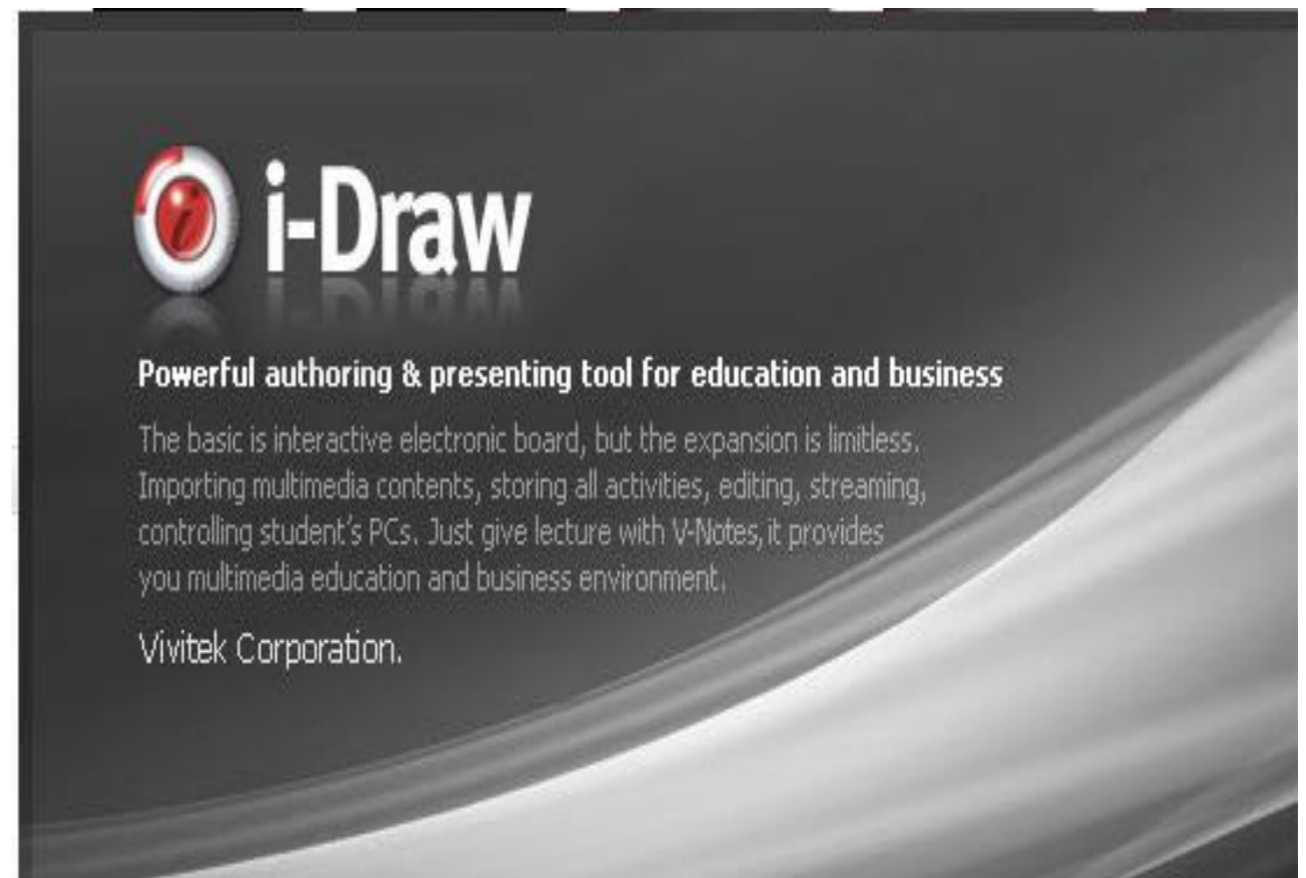
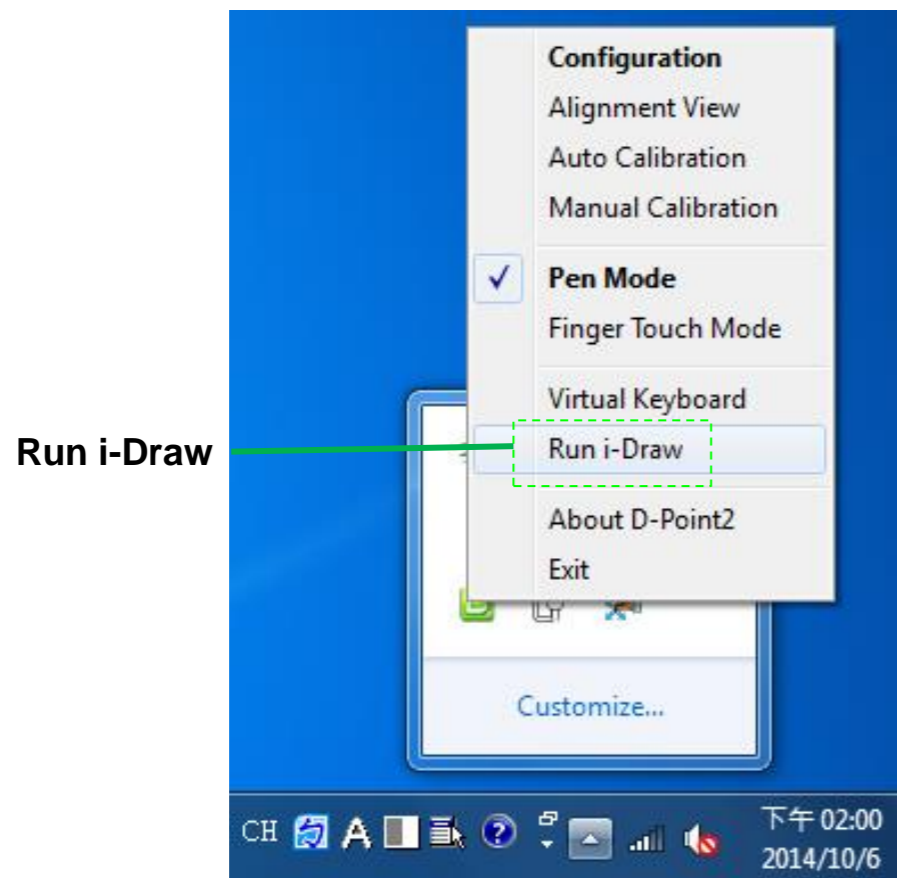
Make sure the touch point is directly aligned in the middle of the calibration point. Otherwise, it may not be positioned correctly.

vivitek® Setting Up D-Point 2 with Interactive Pen

Step 5-1: Confirmation

Confirm If Successful Installed and Working

1. Open the i-Draw software



Note: Choose Run i-Draw from the quick access menu (in Window's system tray) to run the program.

Note: Use the pen to write on the board to see if the calibration was successful setup.



Setting Up D-Point 2 with Interactive Pen

Step 5-2: Confirmation

Simply start writing with the Interactive Pen to test the accuracy and annotation response time.





Interactive Functionality

Finger Touch Mode Installation (DT01/DT02)

vivitek® Accessories: In-The-Box Items

Standard items



Laser Module w/Cover



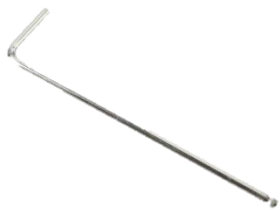
Pen
x2



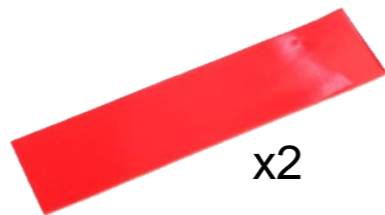
Mini-USB Cable



Alignment Masks
x2



Hex Key

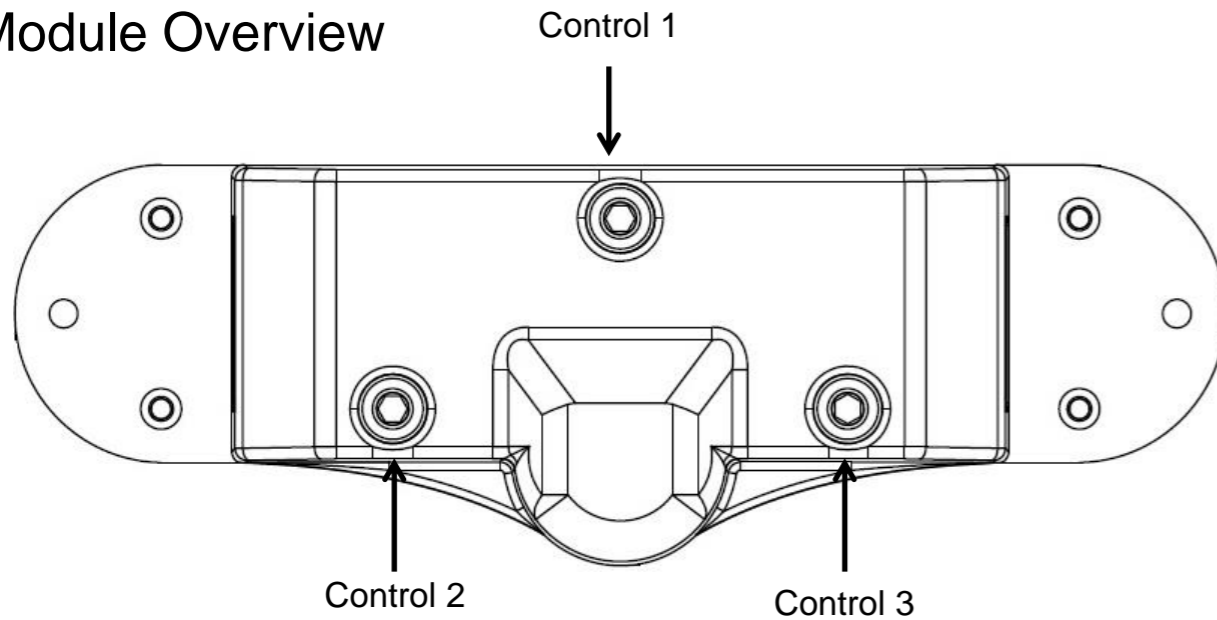


Double Sided Tape
x2

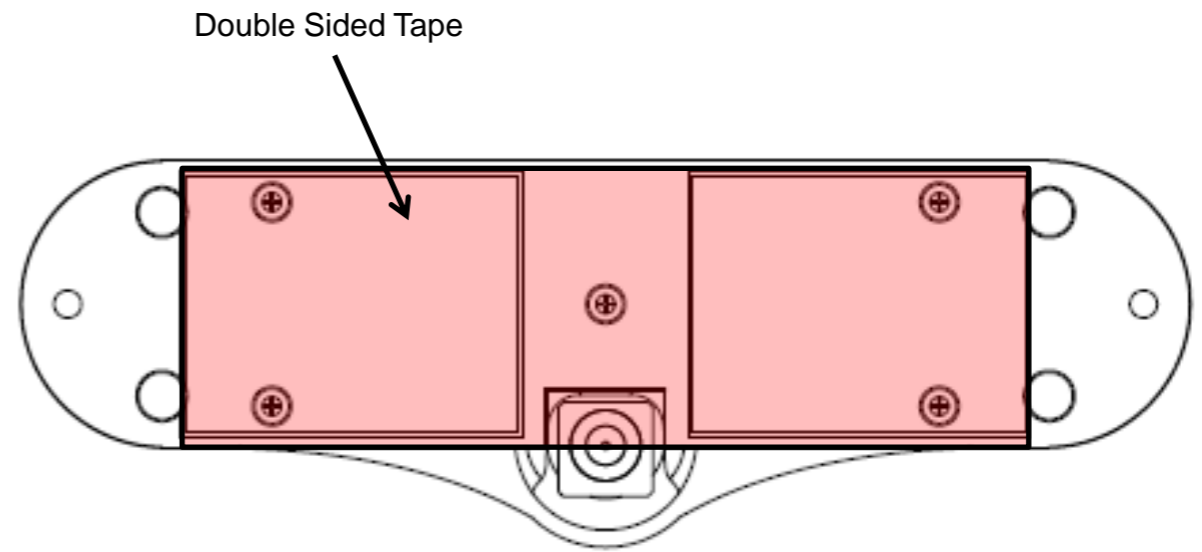


Setting Up DT01/DT02 with Finger Touch

Module Overview

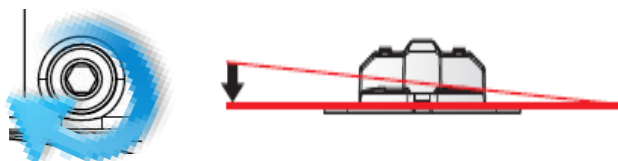


Front View

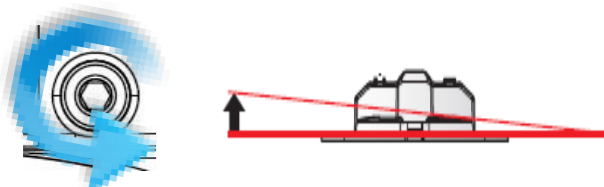


Rear View

Control 2

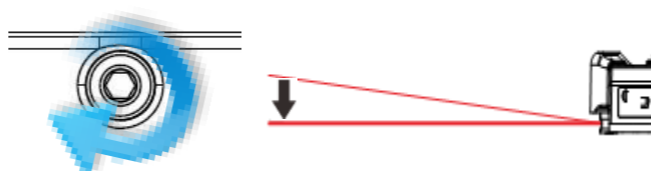


Turning Right (clockwise),
the left side of the laser curtain will move down

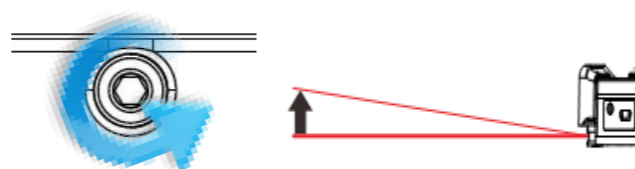


Turning left (counter clockwise),
the left side of the laser curtain will move up

Control 1



Turning Right (clockwise),
the bottom side of the laser curtain will move up

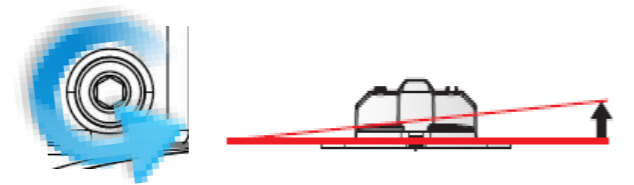


Turning left (counter clockwise),
the bottom side of the laser curtain will move down

Control 3



Turning Right (clockwise),
the left side of the laser curtain will move down



Turning left (counter clockwise),
the left side of the laser curtain will move up

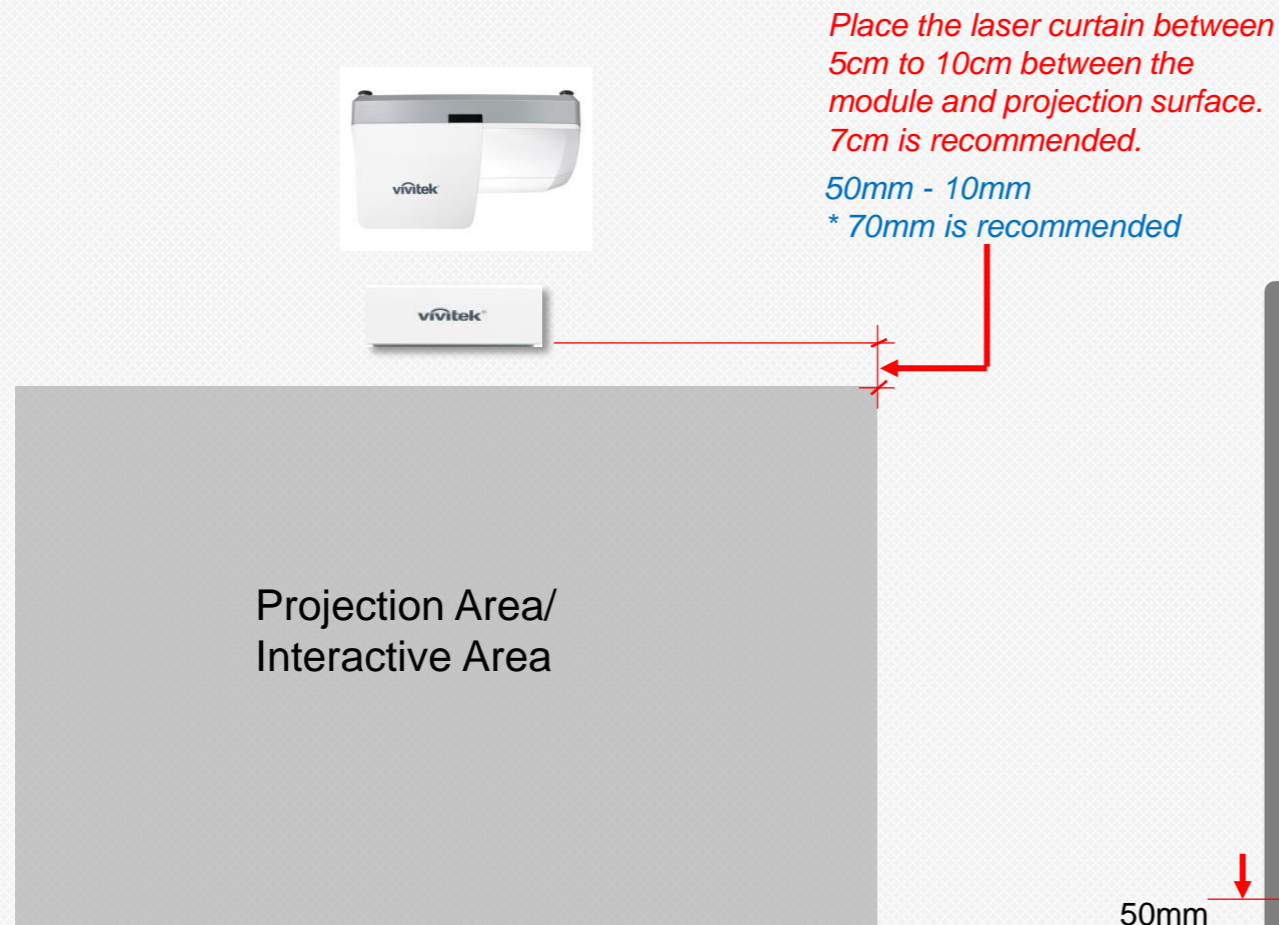


Setting Up DT01/DT02 with Finger Touch

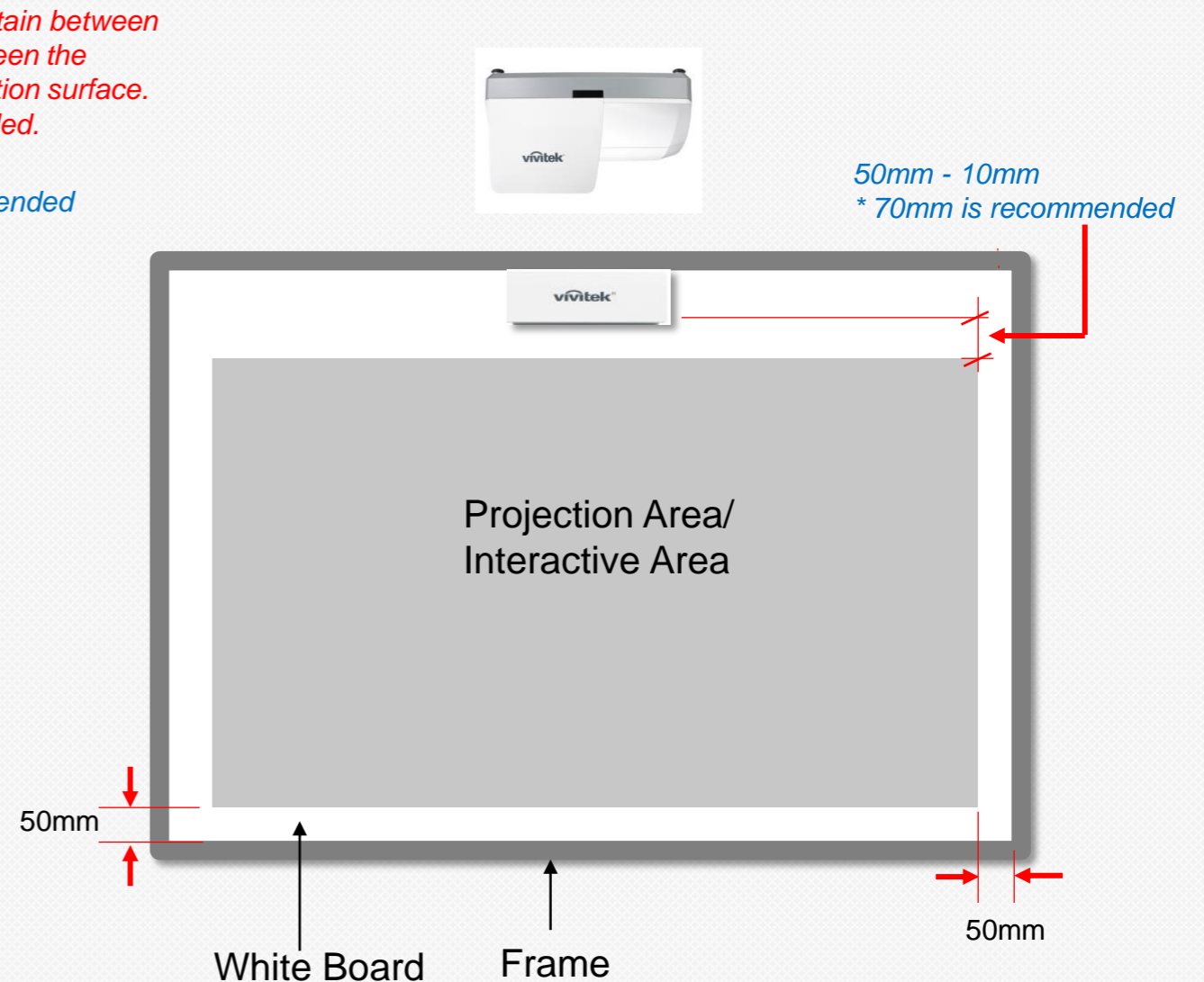
Step 1: Finger Touch Kit Installation

Note:
The Finger Touch Module can be used on an existing wall or whiteboard. Ideally the Finger Touch Module should be used with a whiteboard. The projection surface should be completely flat and free of protrusions.

Wall Installation



Whiteboard Installation

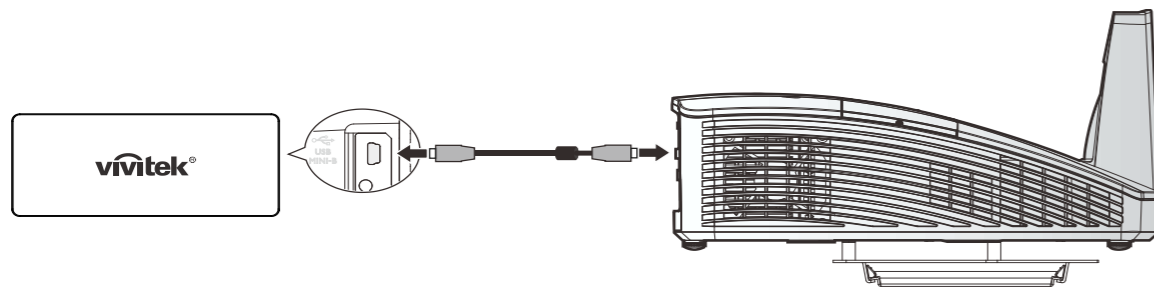


vivitek® Setting Up DT01/DT02 with Finger Touch

Step 2: Methods of Powering the DT01/DT02

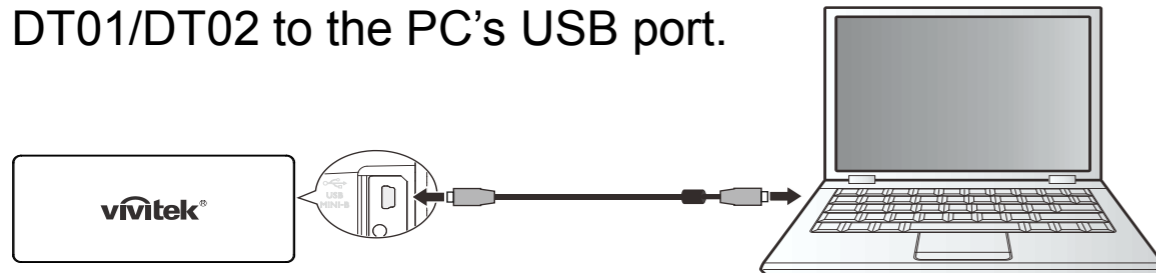
Method 1 (Recommended)

Use the supplied USB cable to connect the DT01/DT02 to the projector's USB Type A port.



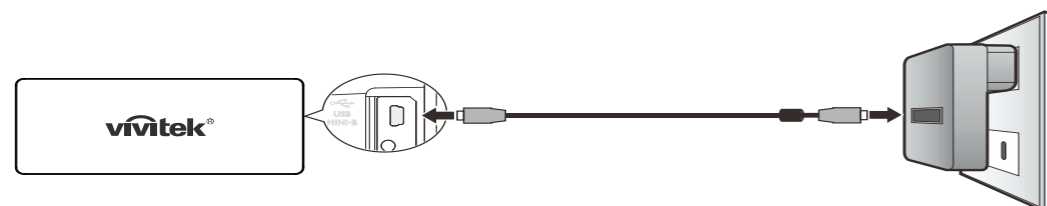
Method 2

Use the supplied USB cable to connect the DT01/DT02 to the PC's USB port.

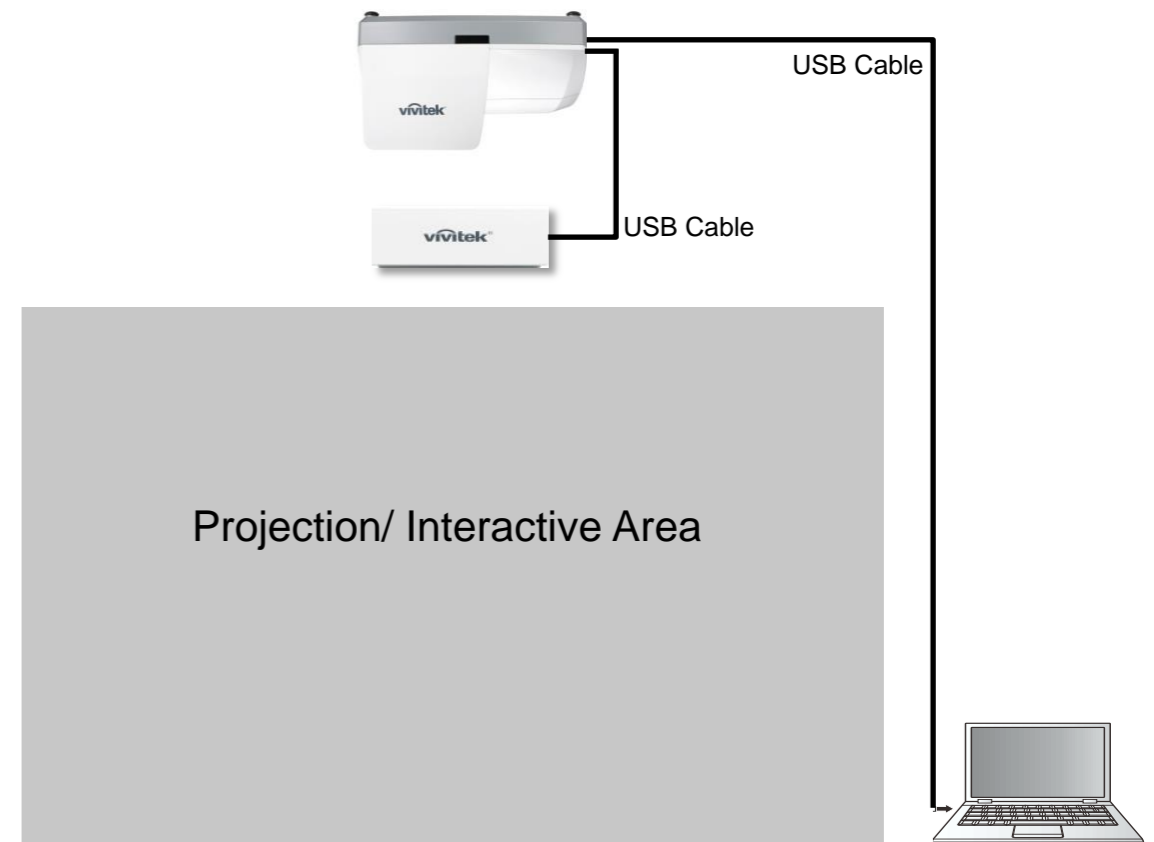


Method 3

Use the supplied USB cable to connect the DT01/DT02 to a Power Socket. (Requires 5V USB Power Adaptor (Not supplied))



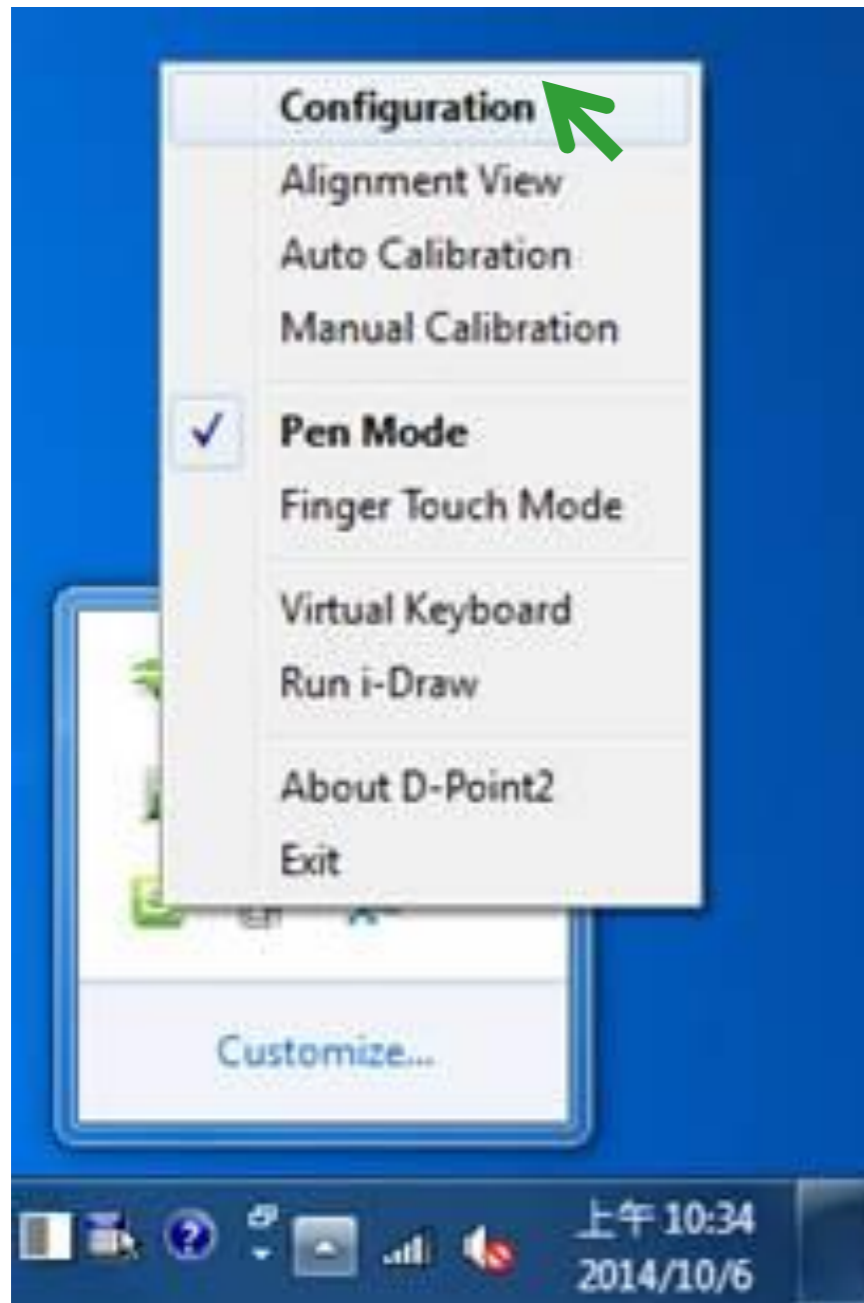
Overview of Connectivity



vivitek® Setting Up DT01/DT02 with Finger Touch

Step 3-1: Configuration Settings

1. Choose Pen Mode



2. Choose Configuration Settings





Setting Up DT01/DT02 with Finger Touch

Step 3-2: Configuration Settings

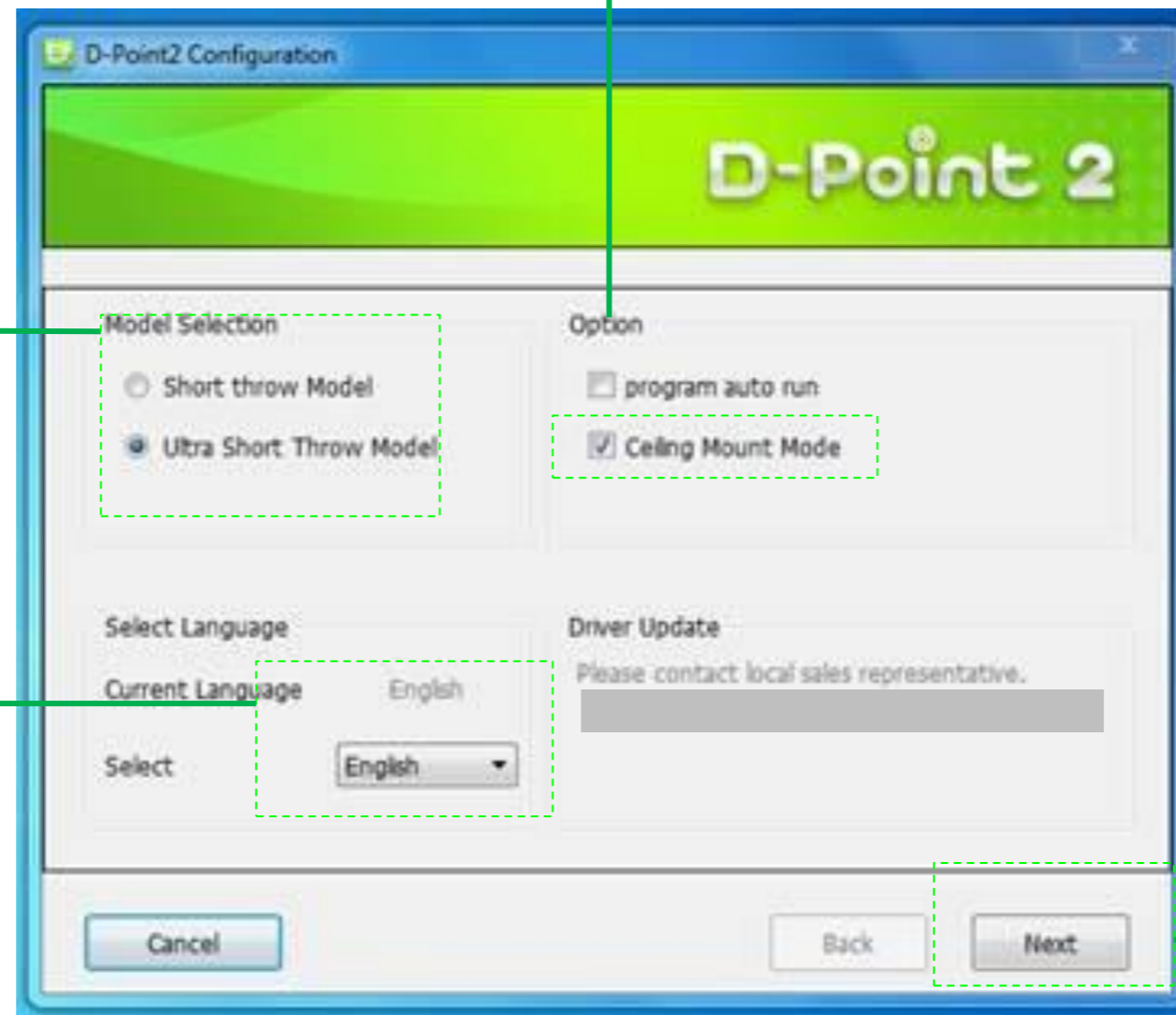
1. Choose Projector Type

- Choose Ultra-short Throw

2. Choose Option

- Ceiling Mount Mode

Note: If projector is placed on the table, do not choose this item.



3. Choose Language

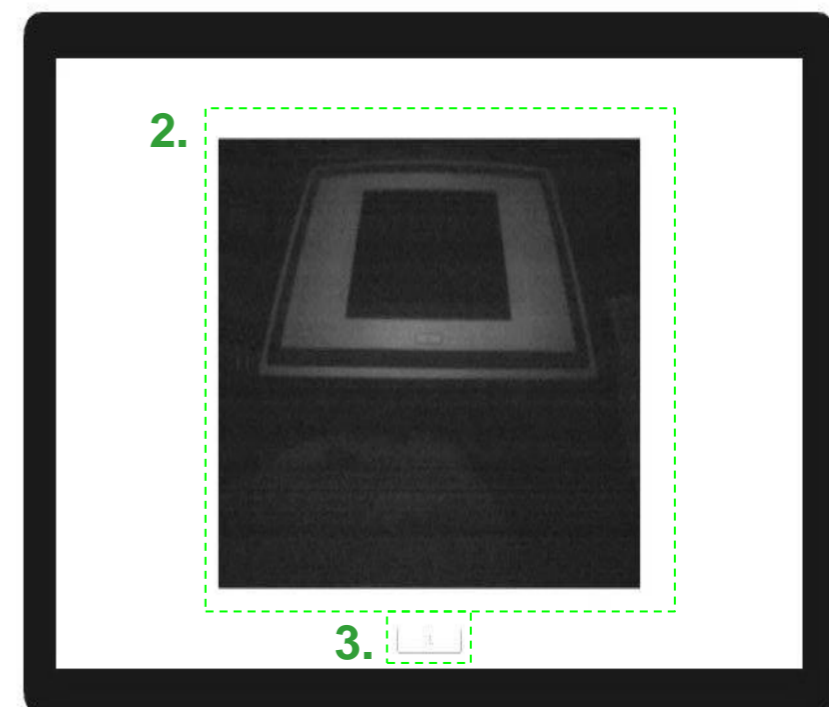
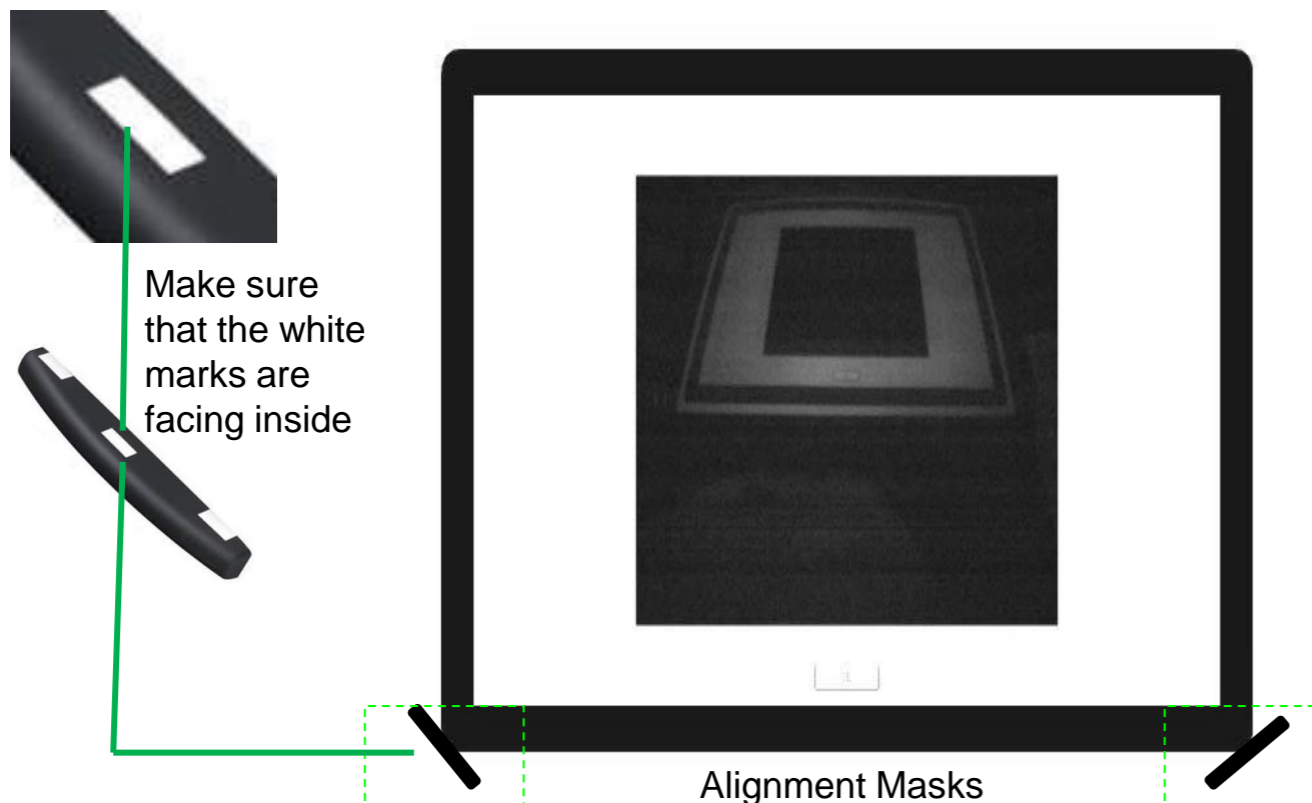
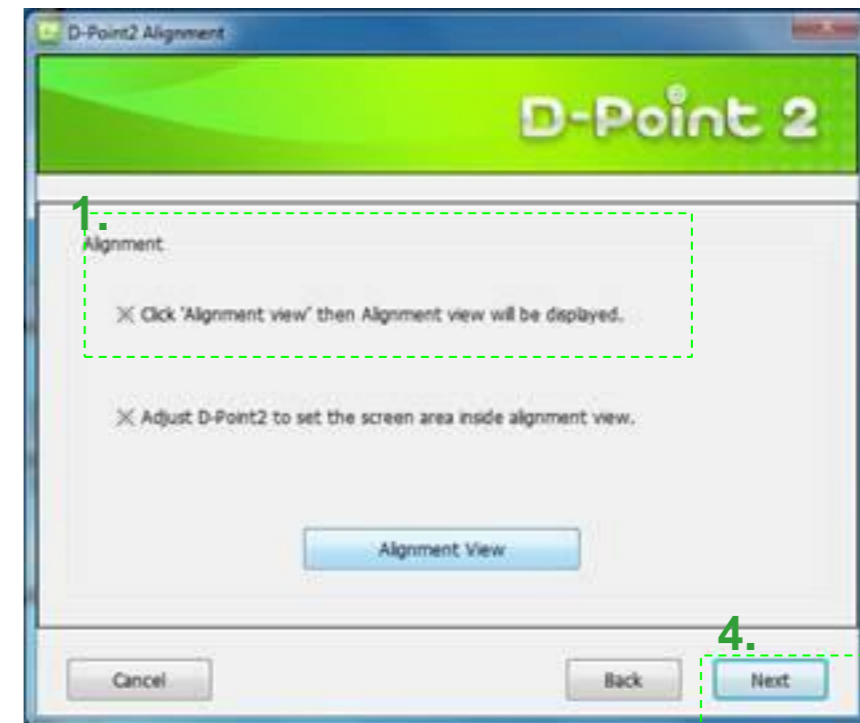
- If language setting is changed, just restart D-Point 2 for settings to change.



Setting Up DT01/DT02 with Finger Touch

Step 4-3 : Configuration Settings

1. Choose Alignment View
2. Confirm if the projection screen is within the camera's projected area
 - Note: Alignment View helps visually verify that the IR camera's view is aligned within the projector's projection coverage.
3. Click "Ok"
4. Choose "Next"
5. Alignment Masks placement

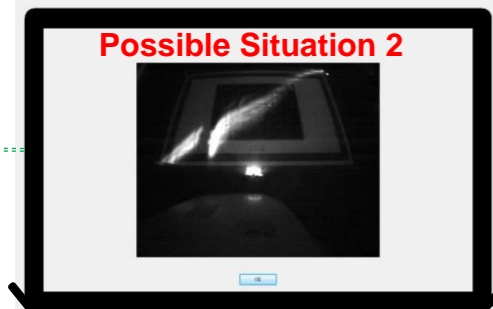
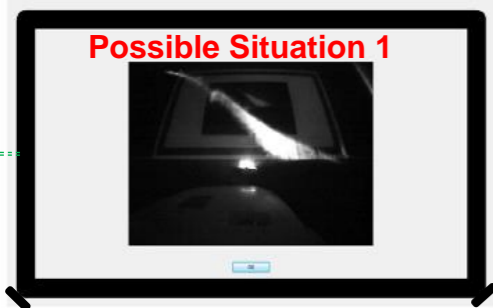




Setting Up DT01/DT02 with Finger Touch

Step 4-4 : Alignment Settings

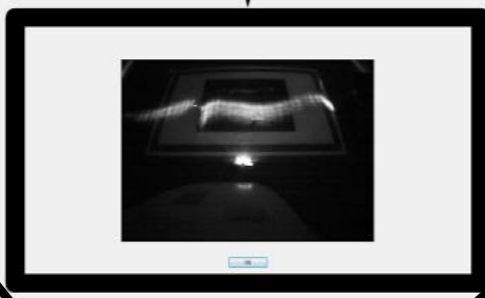
Action 1-1



View after turning on Laser Screen

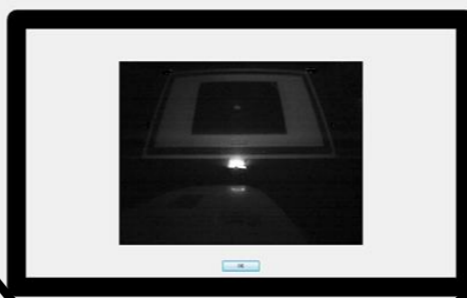
- Use **Controls 2 and 3** to adjust the Laser Reflecting Light so that the light is horizontal. Example: Action 2 Photo

Action 2



- Use **Control 1** to adjust the Laser Reflecting Light so that the light is moved off the screen. Example: Action 3 Photo

Action 3



- Use **Controls 2 and 3** to adjust the Laser Reflecting Light so that only two white dots appear (Alignment bar's left and right reflectors) on the top left and right corners. Example: Action 4 Photo

Action 4



- Use **Controls 2 and 3** to adjust the Laser Reflecting Light so that only one white dot appears (Alignment bar's centered reflector) on the top left and right corners. Example: Action 5 Photo

Action 5



- Laser curtain is now ready for Auto Calibration. Choose Ok to proceed to the next stage.

Note: Remove the Alignment Bars (x2) before choosing Auto Calibration.

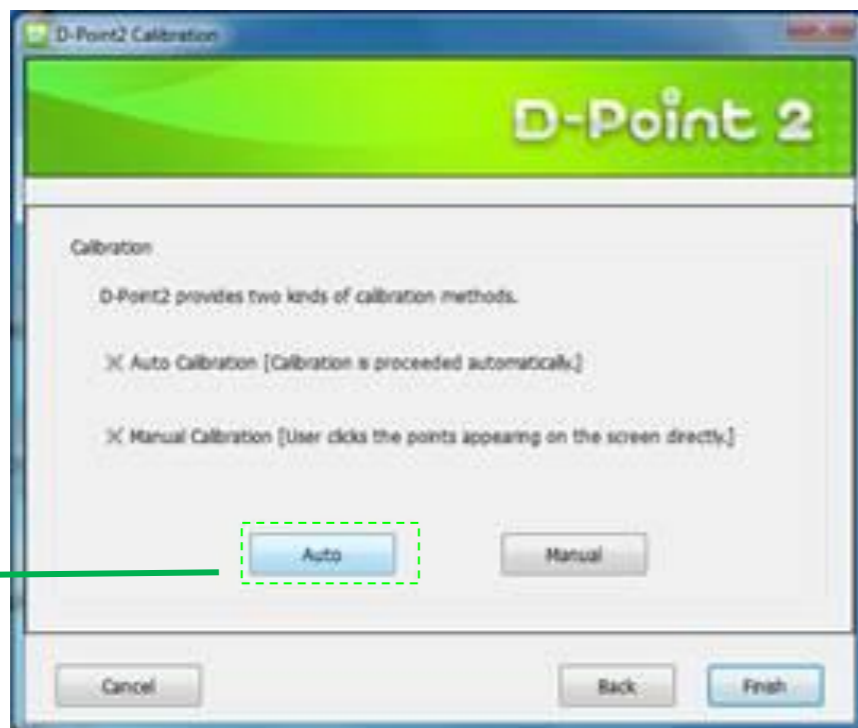


Setting Up DT01/DT02 with Finger Touch

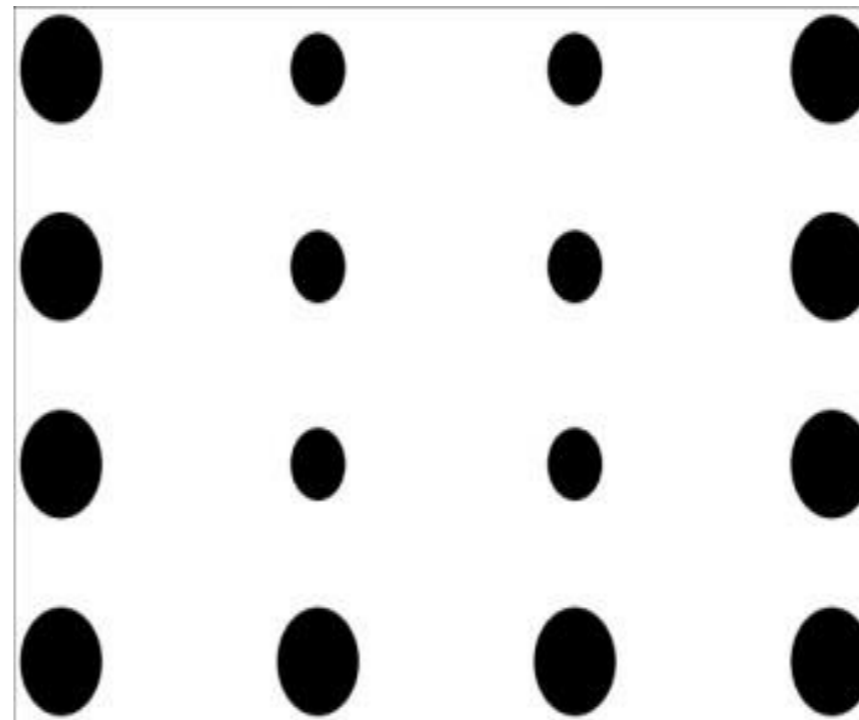
Step 4-5 : Configuration Settings

Chose Auto Calibration

1. Auto



Auto Calibration



Note: Auto calibration takes several seconds.

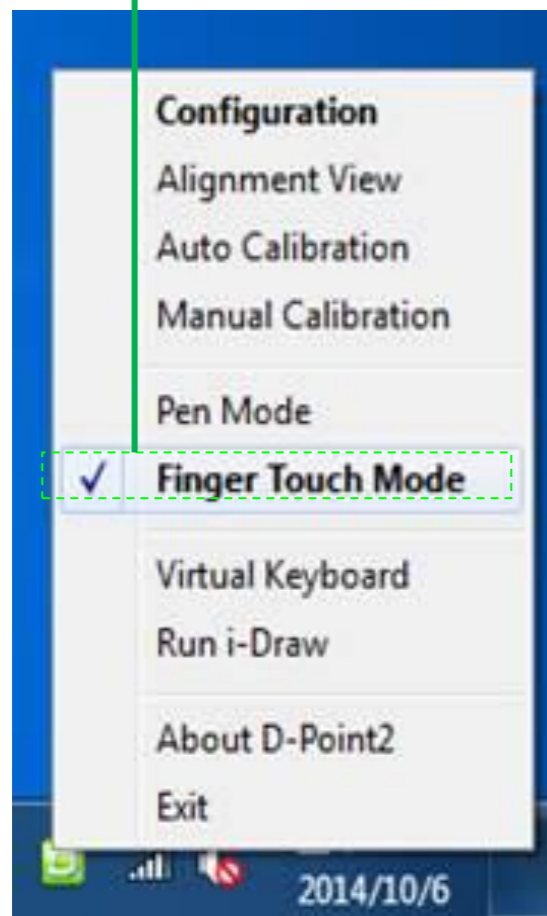
vivitek® Setting Up DT01/DT02 with Finger Touch

Step 4-6: Confirmation

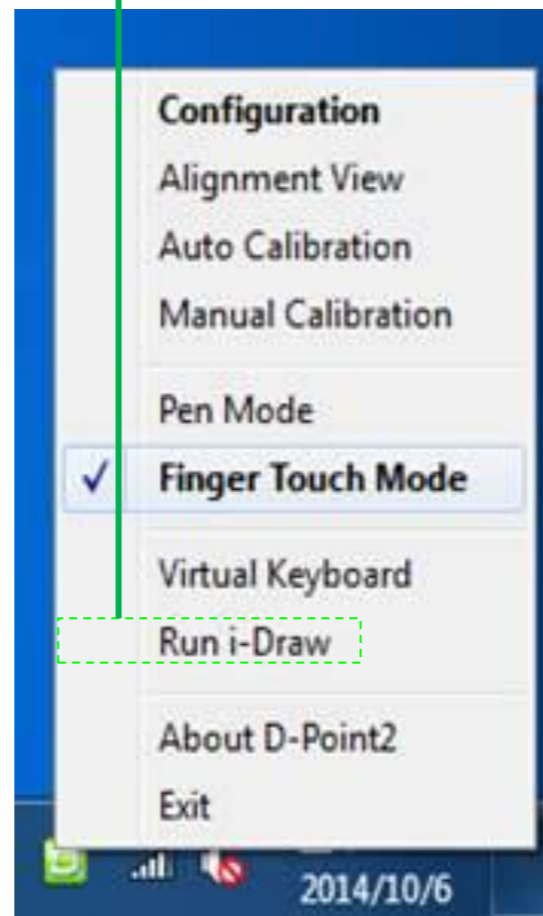
Confirm If Successful Installed and Working

1. Choose Finger Touch Mode
2. Run the i-Draw software

Choose Finger Touch Mode



Run i-Draw



Note: In order to see if calibration was successful setup, use the pen to write with in i-Draw.

Note: Choose Run i-Draw from the quick access men (in Window's system tray) to run the program.



Setting Up DT01/DT02 with Finger Touch

Step 4-7: Confirmation

Simply start writing with the Interactive Pen or Finger to test the accuracy and annotation response time





Vivid Color, Vivid Life

A brand of  **DELTA**